

PADnet™ Connect

Enhance the success of your vascular testing program

PADnet™ Connect is an in-office vascular testing program that links PADnet™+ devices with the PADnet™ Disease Management 2.0 program.



PADnet™+ vascular testing system

PADnet™+ is an easy to use system for non-invasive testing for Peripheral Artery Disease (P.A.D.) and Chronic Venous Insufficiency (CVI). PADnet™+ helps to identify obstructive disease and determine whether medical or surgical treatment is necessary.

- Uses automated means to obtain Ankle-Brachial Index (ABI)/Toe-Brachial Index (TBI), Segmental-Brachial Index (SBI)* values and Pulse Volume Recording (PVR) waveforms
- Testing can be completed in just 15 to 20 minutes during a regular office visit

PADnet™ Disease Management System 2.0

PADnet™ DMS 2.0 is a cloud-based collaborative care solution for developing best practices for vascular program planning and growth. It is the cornerstone of referral and financial data analysis for diagnostic and interventional suites, enabling healthcare administrators to quickly and efficiently evaluate network activity.

- Customized program for each PADnet™ DMS 2.0 site
- Powerful web-based reporting with graphing
- Real-time referral pattern and activity tracking for entire program
- Complete transparency for quantifiable results

Benefits for test sites

Linking test sites with specialists creates a comprehensive collaborative care model. This approach supports care providers in the early identification and treatment of vascular disease.

- Participation in a PADnet™ DMS 2.0 network
- Enhanced coordination between test sites, hospitals and interventional suites
- Ability to send test results instantly via the web to an interpreting specialist

Benefits for PADnet™ DMS 2.0 sites

PADnet™ DMS 2.0 provides the framework for a strong continuum of care and fair financial return with medically appropriate testing.

- Streamlined networking with testing locations
- Support for growth of the PADnet™+ testing referral network
- Advocacy of maximum program participation
- Strengthened relationships with referring physicians

* Optional module.



PADnet™ is Approved

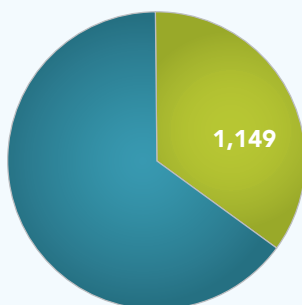
CASE STUDY: ANNE ARUNDEL MEDICAL CENTER

PADnet™ 2.0 Disease Management System

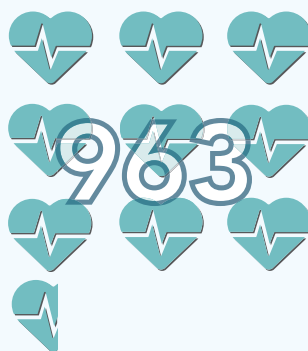
Program screen images, report examples and outcomes data are for illustration purposes only and may vary.

Anne Arundel Medical Center (AAMC) PADnet™ DMS 2.0 Program

PATIENTS WITH P.A.D.
(OF 3,285 TESTED WITH PADnet™+)



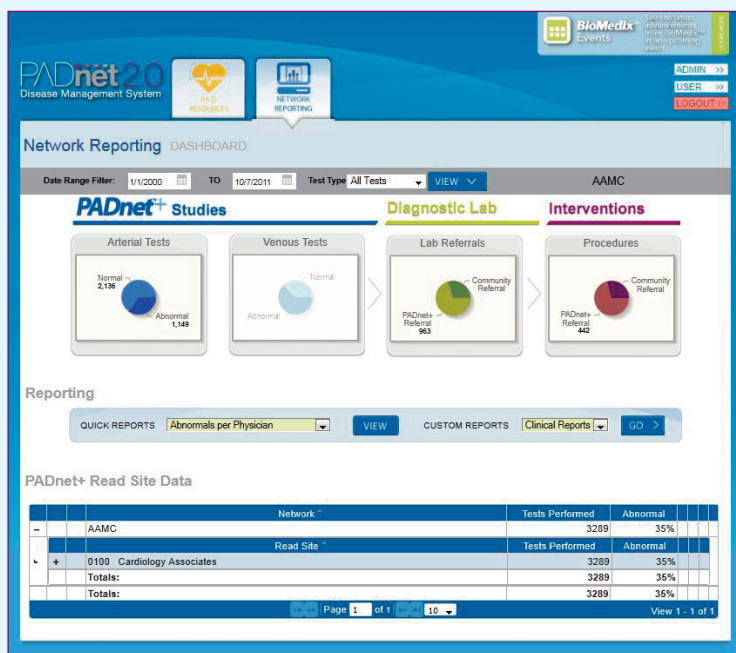
HIGHER LEVEL STUDIES
(OF 1,149 WITH P.A.D.)



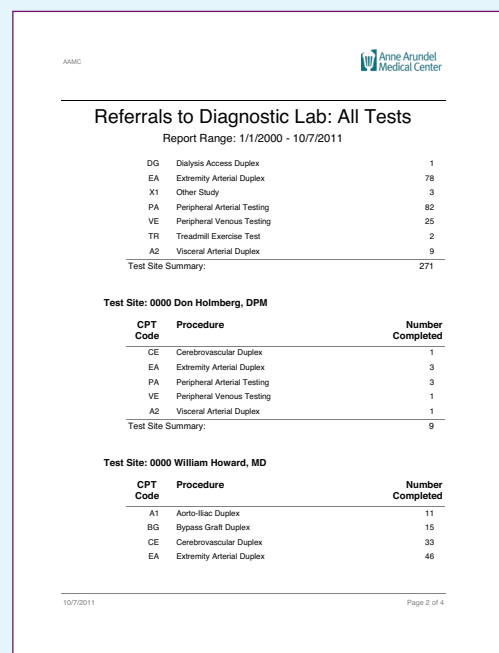
INTERVENTIONAL PROCEDURES
(OF 1,149 WITH P.A.D.)



- **3,285** patients were tested with PADnet™+ in primary care practices as part of AAMC's PADnet™ DMS 2.0 program.
- **1,149** (35%) of 3,285 tested with PADnet™+ were found to have Peripheral Artery Disease (P.A.D.).
- **963** higher level studies were completed for P.A.D. patients referred on to the diagnostic lab.
- **442** interventional procedures were completed on P.A.D. patients who were referred after a higher level study.



Anne Arundel's PADnet™ DMS 2.0 Network Reporting Dashboard displays abnormality rates, referrals and important Read Site information at a glance.



Anne Arundel's PADnet™ DMS 2.0 program provides valuable reports about program activity.